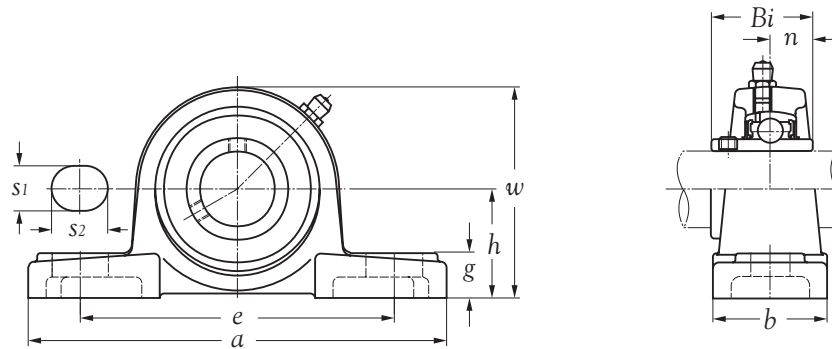


Shaft dia. mm inch	Unit number	Nominal dimensions										Bolt size mm inch	Bearing number	Housing number	Mass of unit Kg
		h	a	e	b	s ₁	s ₂	g	w	Bi	n				
12 1/2	UCP 201	30.2	127	96	37	13	19	14	60.7	31.0	12.7	M 10	UC 201 UC 201-8	P 203	0.68 0.68
	UCP 201-8	1-3/16	5	3-25/32	1-29/64	3/64	3/4	35/64	2-25/64	1.2205	0.5000	3/8			
15 5/8	UCP 202	30.2	127	96	37	13	19	14	60.7	31.0	12.7	M 10	UC 202 UC 202-10	P 203	0.67 0.67
	UCP 202-10	1-3/16	5	3-25/32	1-29/64	3/64	3/4	35/64	2-25/64	1.2205	0.5000	3/8			
17 11/16	UCP 203	30.2	127	96	37	13	19	14	60.7	31.0	12.7	M 10	UC 203 UC 203-11	P 203	0.66 0.66
	UCP 203-11	1-3/16	5	3-25/32	1-29/64	3/64	3/4	35/64	2-25/64	1.2205	0.5000	3/8			
20 3/4	UCP 204	33.3	127	96	37	13	16	14	65.0	31.0	12.7	M 10	UC 204 UC 204-12	P 204	0.66 0.67
	UCP 204-12	1-5/16	5	3-25/32	1-29/64	3/64	5/8	35/64	2-9/16	1.2205	0.5000	3/8			
25 1	UCP 205	36.5	140	105	38	13	19	15	71.0	34.1	14.3	M 10	UC 205 UC 205-16	P 205	0.77 0.76
	UCP 205-16	1-7/16	5-3/64	4-9/64	1-1/2	3/64	3/4	19/32	2-51/64	1.3425	0.5630	3/8			
30 1-1/8 1-1/4	UCP 206	42.9	160	121	44	14	19	16	83.0	38.1	15.9	M 12	UC 206 UC 206-18 UC 206-20	P 206	1.22 1.24 1.20
	UCP 206-18	1-11/16	6-19/64	4-49/64	1-47/64	35/64	3/4	5/8	3-17/64	1.5000	0.6260	7/16			
	UCP 206-20	1-11/16	6-19/64	4-49/64	1-47/64	35/64	3/4	5/8	3-17/64	1.5000	0.6260	7/16			
35 1-1/4 1-3/8	UCP 207	47.6	167	126	48	15	19	17	93.0	42.9	17.5	M 12	UC 207 UC 207-20 UC 207-22	P 207	1.55 1.61 1.56
	UCP 207-20	1-7/8	6-37/64	4-31/32	1-57/64	19/32	3/4	43/64	3-43/64	1.6890	0.6890	7/16			
	UCP 207-22	1-7/8	6-37/64	4-31/32	1-57/64	19/32	3/4	43/64	3-43/64	1.6890	0.6890	7/16			
40 1-1/2	UCP 208	49.2	180	136	52	15	21	18	100.0	49.2	19.0	M 12	UC 208 UC 208-24	P 208	1.88 1.92
	UCP 208-24	1-15/16	7-3/32	5-23/64	2-3/64	19/32	53/64	45/64	3-15/16	1.9370	0.7480	7/16			
45 1-5/8 1-3/4	UCP 209	54	190	146	54	15	21	20	108.0	49.2	19.0	M 12	UC 209 UC 209-26 UC 209-28	P 209	2.19 2.29 2.21
	UCP 209-26	2-1/8	7-31/64	5-3/4	2-1/8	19/32	53/64	25/32	4-1/4	1.9370	0.7480	7/16			
	UCP 209-28	2-1/8	7-31/64	5-3/4	2-1/8	19/32	53/64	25/32	4-1/4	1.9370	0.7480	7/16			
50 1-7/8	UCP 210	57.2	204	159	57	19	22	21	114.0	51.6	19.0	M 16	UC 210 UC 210-30	P 210	2.73 2.80
	UCP 210-30	2-1/4	8-1/64	6-17/64	2-15/64	3/4	55/64	53/64	4-31/64	2.0315	0.7480	5/8			
55 2	UCP 211	63.5	217	172	60	19	22	22	126	55.6	22.2	M 16	UC 211 UC 211-32	P 211	3.38 3.53
	UCP 211-32	2-1/2	8-35/64	6-49/64	2-23/64	3/4	55/64	55/64	4-61/64	2.1890	0.8740	5/8			
60 2-1/4	UCP 212	69.9	238	186	66	19	25	24	138	65.1	25.4	M 16	UC 212 UC 212-36	P 212	4.75 4.89
	UCP 212-36	2-3/4	9-3/8	7-21/64	2-39/64	3/4	63/64	15/16	5-7/16	2.5630	1.0000	5/8			
65 2-1/2	UCP 213	76.2	262	203	70	23	29	26	151	65.1	25.4	M 20	UC 213 UC 213-40	P 213	5.81 5.89
	UCP 213-40	3	10-5/16	7-63/64	2-3/4	29/32	1-9/64	1-1/64	5-61/64	2.5630	1.0000	3/4			
70 2-3/4	UCP 214	79.4	266	210	72	23	29	27	155	74.6	30.2	M 20	UC 214 UC 214-44	P 214	6.50 6.51
	UCP 214-44	3-1/8	10-15/32	8-17/64	2-53/64	29/32	1-9/64	1-1/16	6-7/64	2.9370	1.1890	3/4			

Remark: 1) Regular production in "J" tolerance.
 2) Bearing unit with grease holes and grease groove.
 3) Bearing unit without stop pin.



Shaft dia. mm inch	Unit number	Nominal dimensions										Bolt size mm inch	Bearing number	Housing number	Mass of unit Kg
		h	a	e	b	s ₁	s ₂	g	w	Bi	n				
75 3	UCP 215	82.6	274	217	74	25	29	28	161.6	77.8	33.3	M 20	UC 215	P 215	7.11
	UCP 215-48	3-1/4	10-25/32	8-35/64	2-29/32	63/64	1-9/64	1-7/64	6-23/64	3.0630	1.3110	3/4	UC 215-48		7.03
80 3-1/8	UCP 216	88.9	292	232	78	25	30	30	174	82.6	33.3	M 20	UC 216	P 216	8.69
	UCP 216-50	3-1/2	11-1/2	9-9/64	3-5/64	63/64	1-3/16	1-3/16	6-27/32	3.2520	1.3110	3/4	UC 216-50		8.74
85 3-1/4	UCP 217	95.2	310	247	83	25	30	32	186	85.7	34.1	M 20	UC 217	P 217	10.63
	UCP 217-52	3-3/4	12-13/64	9-23/32	3-17/64	63/64	1-3/16	1-17/64	7-21/64	3.3740	1.3425	3/4	UC 217-52		10.85
90 3-1/2	UCP 218	101.6	326	262	88	27	30	33	198	96.0	39.7	M 22	UC 218	P 218	12.95
	UCP 218-56	4	12-53/64	10-5/16	3-15/32	1-1/16	1-3/16	1-19/64	7-51/64	3.7800	1.5630	7/8	UC 218-56		13.06

- Remark: 1) Regular production in "J" tolerance.
 2) Bearing unit with grease holes and grease groove.
 3) Bearing unit without stop pin.